

Introduction of Linux

高怡,梁梦雯

| oslab2020@163.com

PART I

- Brief Introduction
- Basic Conceptions & Environment
- Install & Configure a Virtual Machine
- Basic Commands

PART II

- Shell Script
- Compile & Debug (for C)
- Text Editor (Vim, Sublime text, Atom)

PART I

- Brief Introduction
- Basic Conceptions & Environment
- Install & Configure a Virtual Machine
- Basic Commands

History

- 1969 - UNIX
- 1984 - GNU
- 1987 - MINIX
- 1995 - POSIX
- Internet

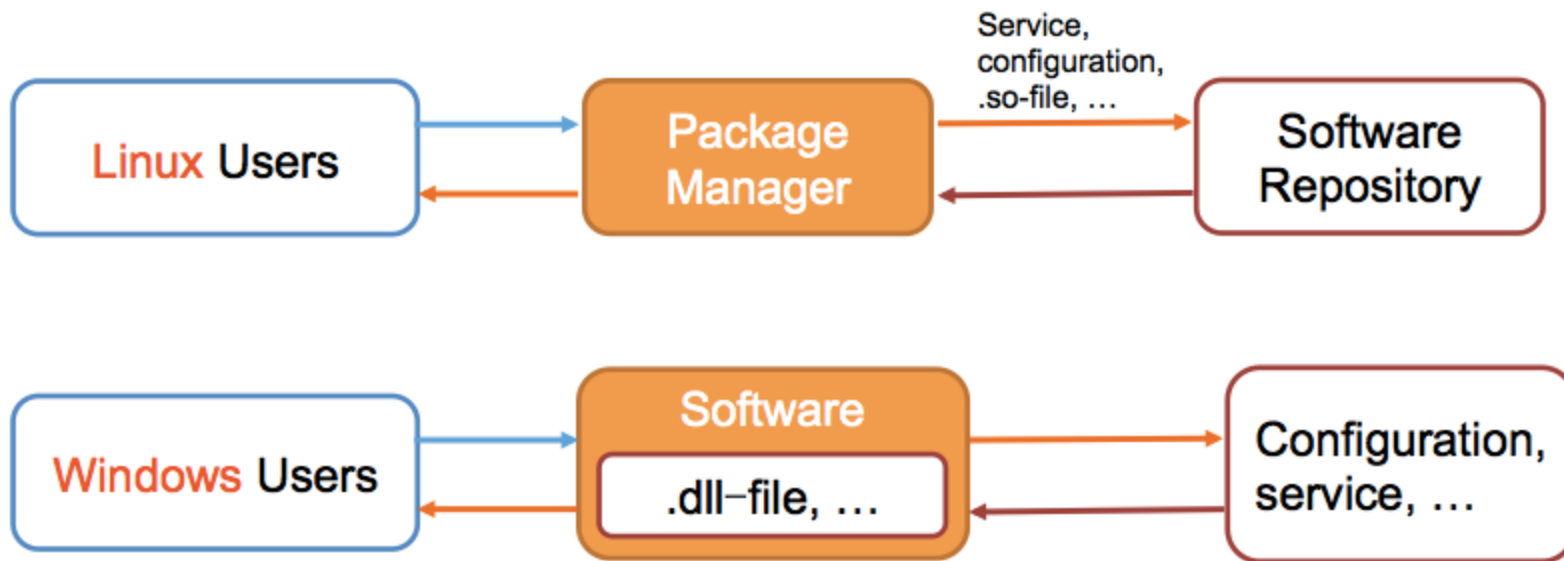
Distribution

- Ubuntu
- Debian
- CentOS
- Arch Linux
- Fedora
- ...

Features

- Protable
- Open source
- Security
- Shell
- ...

Linux vs Windows Software

















Linux install software

Package Manager: `apt-get` (Advanced Package Tool)

```
zheng@kernel:~$ sudo apt-get autoremove
Reading package lists... Done
Building dependency tree
Reading state information... Done
0 upgraded, 0 newly installed, 0 to remove and 0 not upgraded.
zheng@kernel:~$ sudo apt-get install gcc
Reading package lists... Done
Building dependency tree
Reading state information... Done
The following packages were automatically installed and are no longer required:
  manpages-dev libc-dev-bin linux-libc-dev
Use 'apt-get autoremove' to remove them.
The following extra packages will be installed:
  binutils gcc-4.4 libc-dev-bin libgomp1 linux-libc-dev manpages-dev
Suggested packages:
  binutils-doc gcc-multilib autoconf automake1.9 libtool flex bison gdb
  gcc-doc gcc-4.4-multilib libmudflap0-4.4-dev gcc-4.4-doc gcc-4.4-locales
  libgcc1-dbg libgomp1-dbg libmudflap0-dbg libcloog-ppl0 libpp1-c2 libpp17
Recommended packages:
  libc6-dev libc-dev
The following NEW packages will be installed:
  binutils gcc gcc-4.4 libc-dev-bin libgomp1 linux-libc-dev manpages-dev
0 upgraded, 7 newly installed, 0 to remove and 0 not upgraded.
Need to get 7,147kB of archives.
After this operation, 22.8MB of additional disk space will be used.
Do you want to continue [Y/n]?
```


Windows install software

msvcr80.dll

 msvcr80.dll	C:\Program Files\AliWangWang	612 KB
 msvcr80.dll	C:\Program Files\AliWangWang\7.21.18C	612 KB
 msvcr80.dll	C:\Program Files\AliWangWang\8.00.06C	612 KB
 msvcr80.dll	C:\Program Files\AliWangWang\8.00.08C	612 KB
 msvcr80.dll	C:\Program Files\AliWangWang\new	612 KB
 msvcr80.dll	C:\Program Files\Baidu\BaiduYun	618 KB
 msvcr80.dll	C:\Program Files\Baidu\BaiduYunGuanjia	618 KB
 msvcr80.dll	C:\Program Files\Tencent\Qzone	612 KB
 msvcr80.dll	C:\Program Files\Microsoft SQL Server\90\Setup Bootstrap	612 KB
 msvcr80.dll	C:\Program Files\Tencent\QQMusic\QzoneMusic	618 KB
 msvcr80.dll	C:\Program Files\Tencent\Qzone\Ver_247.311	612 KB
 msvcr80.dll	C:\Program Files\Tencent\QQMusic\QzoneMusic\QQMusicAd...	618 KB
 msvcr80.dll	C:\Program Files\Common Files\Tencent\QQMiniDL\41\BT	618 KB
 msvcr80.dll	C:\Program Files\Common Files\Tencent\QQMiniDL\41\eMule	618 KB

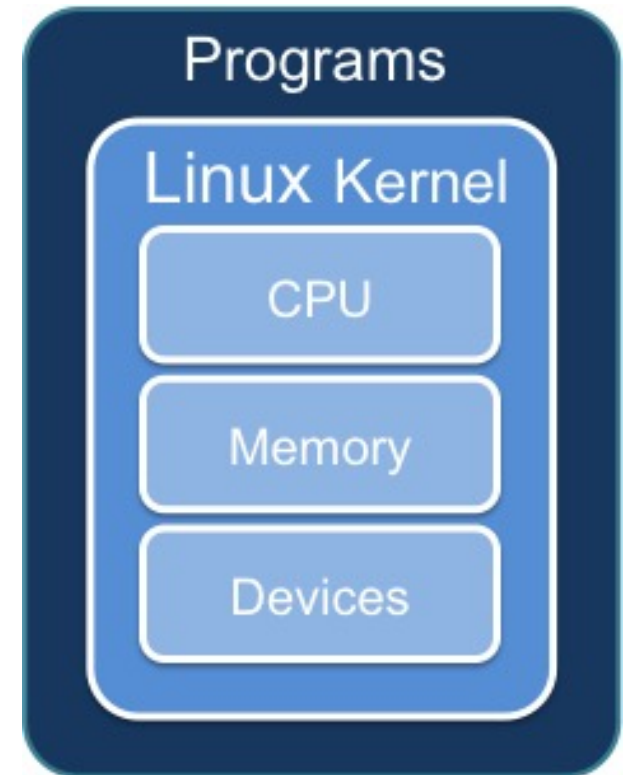
PART I

- Brief Introduction
- Basic Conceptions & Environment
- Install & Configure a Virtual Machine
- Basic Commands

Linux Kernel

The most important component of Linux OS, containing all the operating system's **core functions** and the **device drivers**.

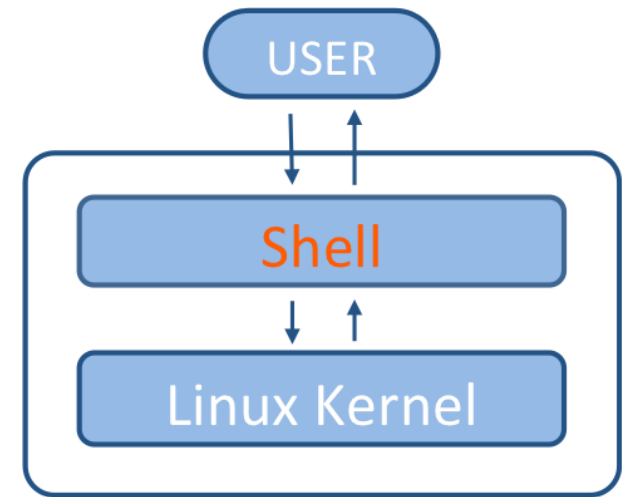
- memory management
- process scheduling
- file system
- ...



Shell (CLI shell)

Command Line Interface

A **program** which accepts commands as text input and **converts commands** to appropriate operating system functions.

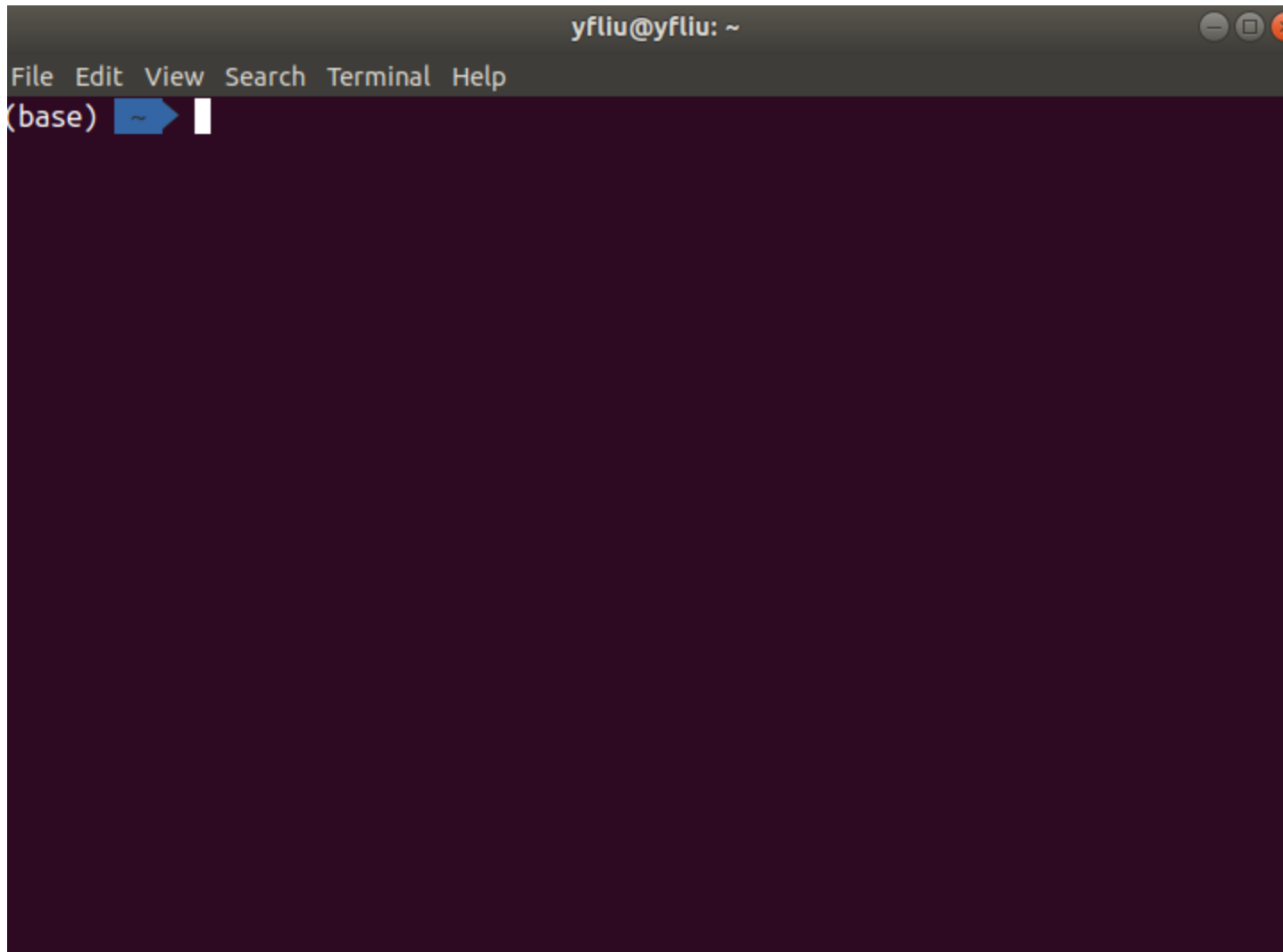


Terminal ↔ Shell

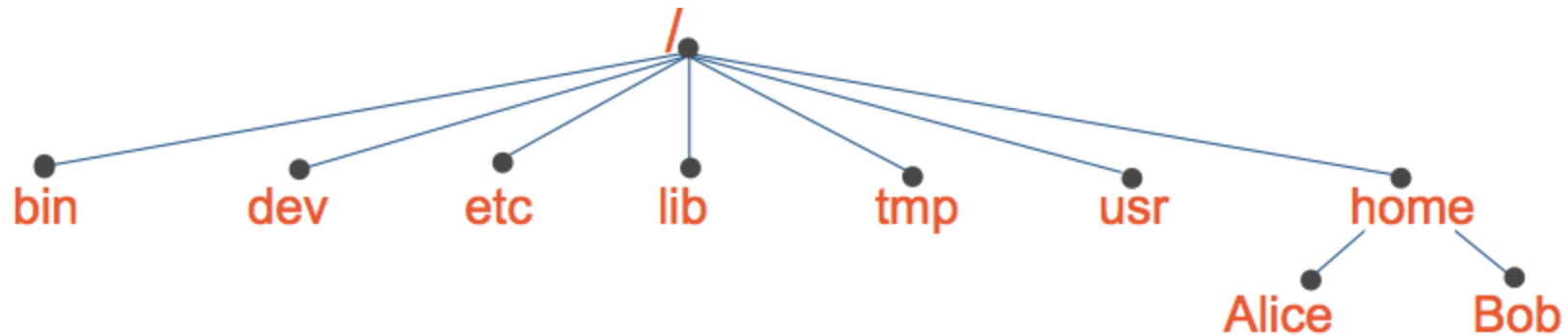
The terminal send information to the shell, receive and display the information from the shell.

Open Terminal

keyboard accelerators: CTRL+ALT+T



File System



Tree structure, with the root directory " / "

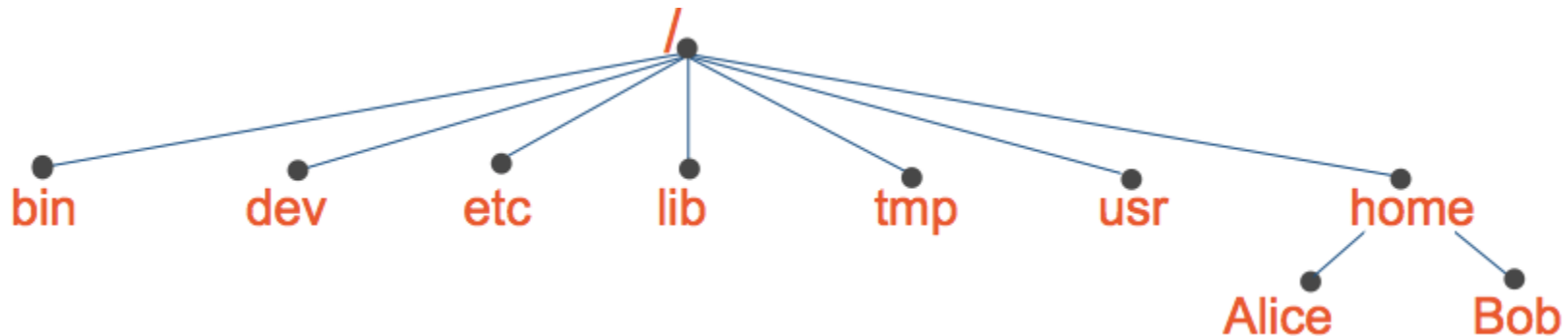
```
/home/oslab/...
```

```
~ = /home/oslab
```

```
.
```

```
..
```

File System



`/bin` : essential tools and other programs

`/dev` : files representing the system's hardware devices

`/etc` : system configuration files

`/home` : the home directory for all system's users

`/lib` : essential system library files

`/proc` : files that give information about current system

`/usr` : files related to user tools and applications

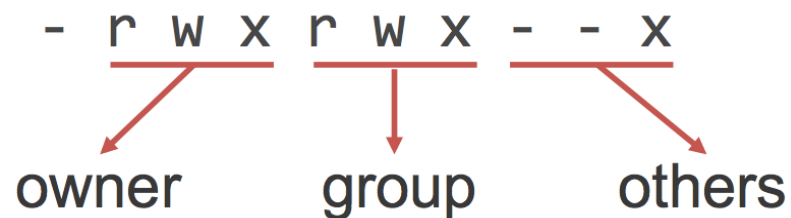
User & Group

The system determines whether or not a **user** or **group** can access a file or directory.

There is a special user called **Super User** or the **root** which has permission to access any file and directory.

Three **Permissions**:

- **r** = read
- **w** = write
- **x** = execute



Environment Variables

Environment variables are a **set of values** that can affect the way running processes will behave on a computer.

- `PATH` -- Contains a colon-separated list of directories that the shell searches for commands that do not contain a slash in their name.
- `HOME` -- Contains the location of the user's home directory.
- ...

Set The Environment Variables:

```
export VARIABLE = value      # temporary
/etc/profile                 # permanent, all users

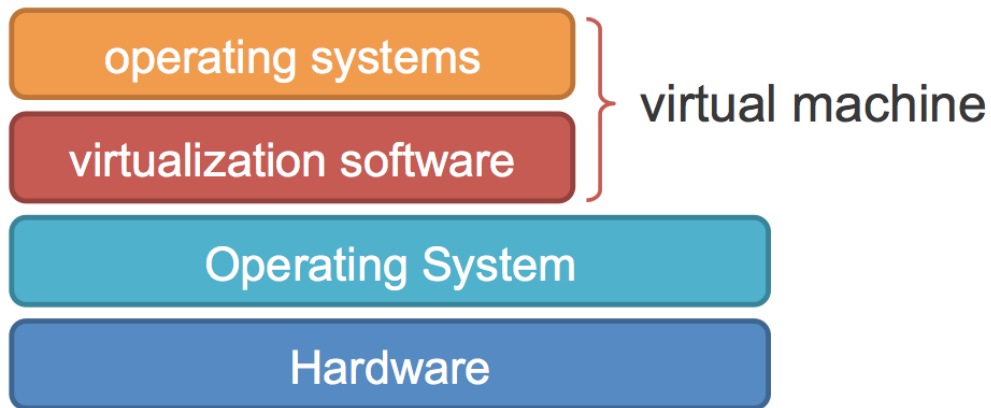
~/.profile                   # permanent, one user
~/.bashrc
```

PART I

- Brief Introduction
- Basic Conceptions & Environment
- **Install & Configure a Virtual Machine**
- Basic Commands

Virtual Machine

A virtual machine is an emulation of a particular computer system.



Virtualization Software provide (hardware) resources virtually to the new OS.

- VMware
- Virtual Box
- Virtual PC

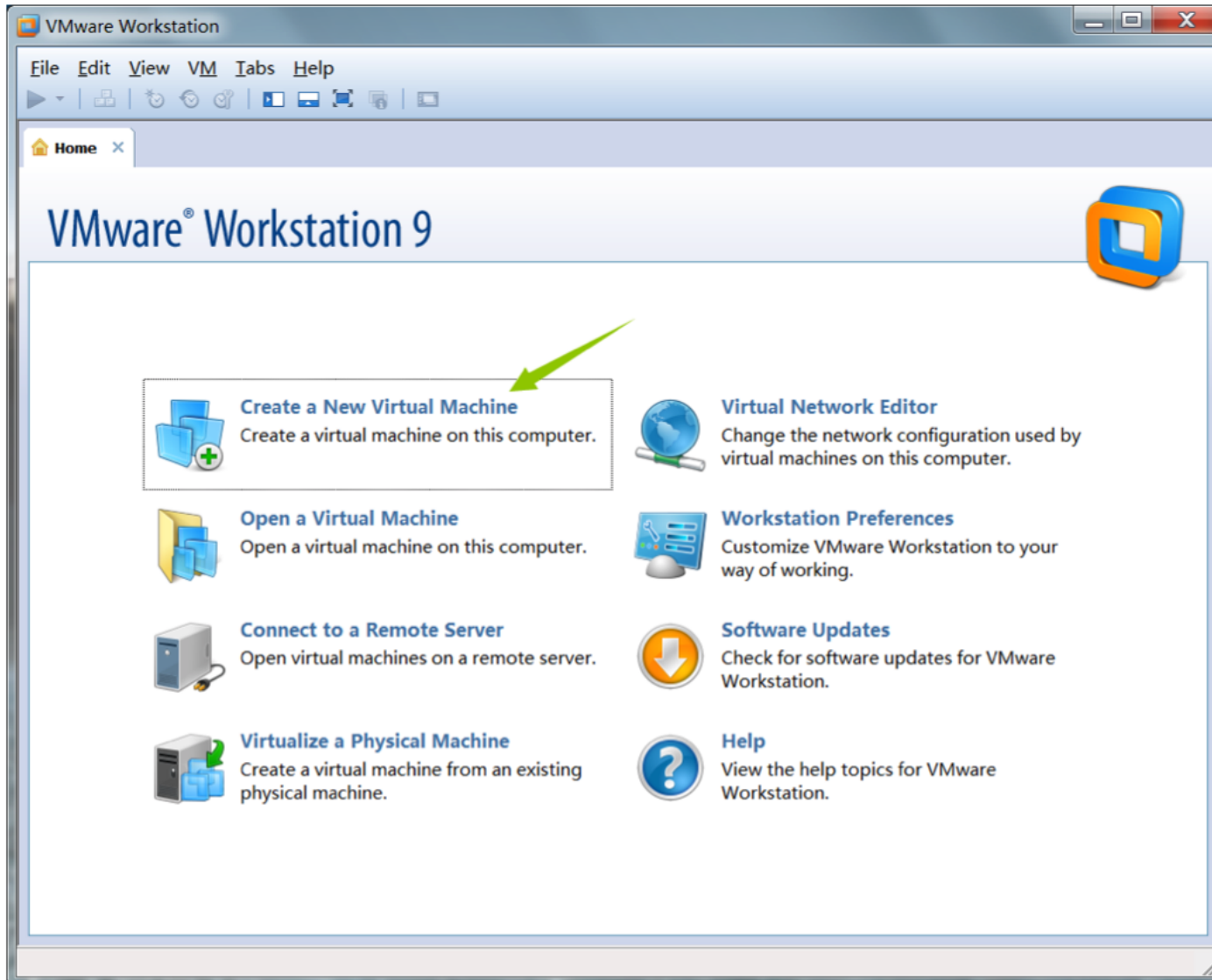
Install the Virtual Machine

VMware Workstation 9.0 + Ubuntu 14.04 LTS (kernel 3.19)

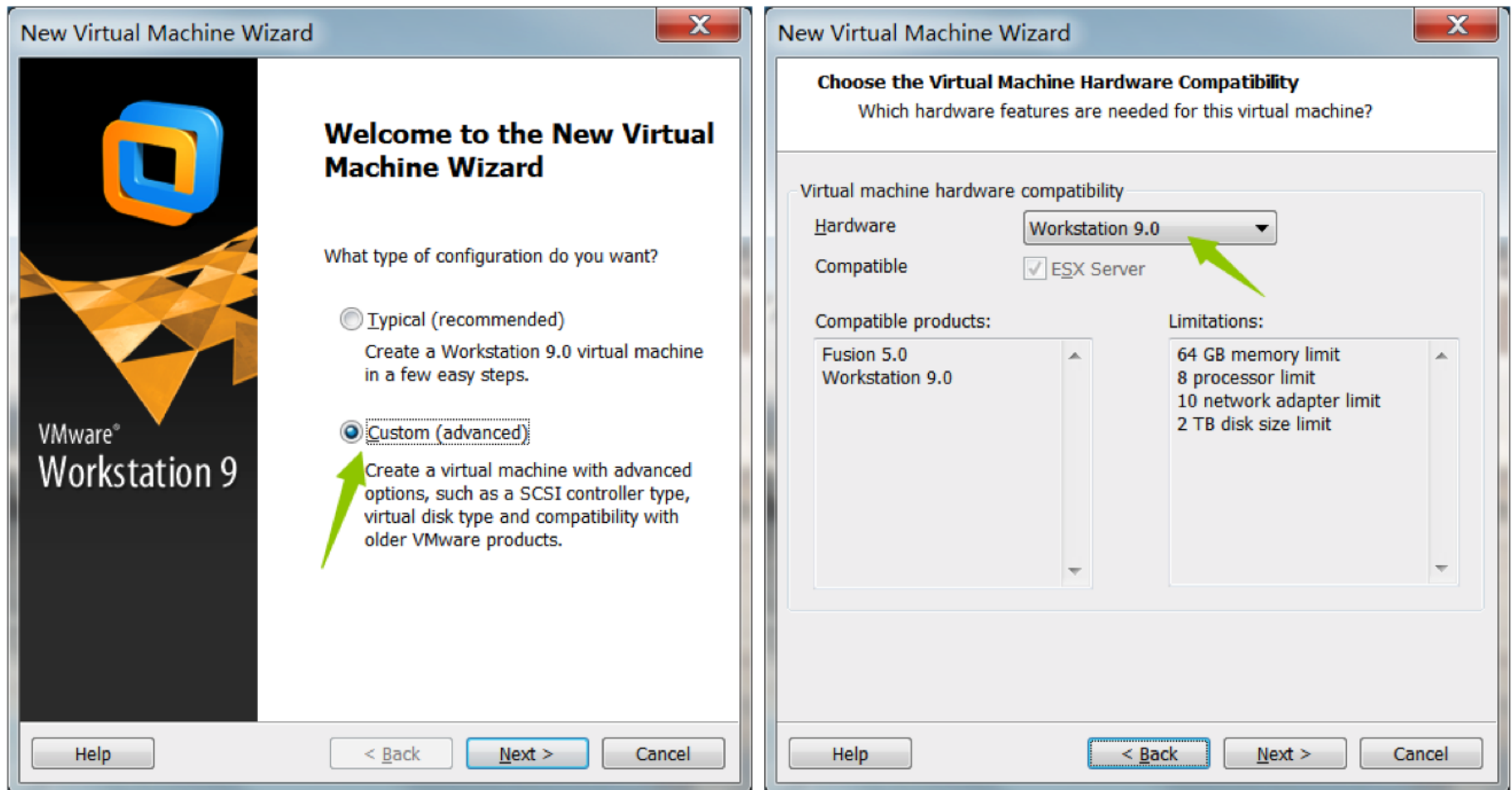


1. Download the Setup File of Vmware 9.0
2. Download the Ubuntu Ubuntu 14.04 LTS from the official website
www.ubuntu.com/download/desktop
3. Install VMware 9.0
4. Create a Virtual Machine in the VMware

Create a Virtual Machine

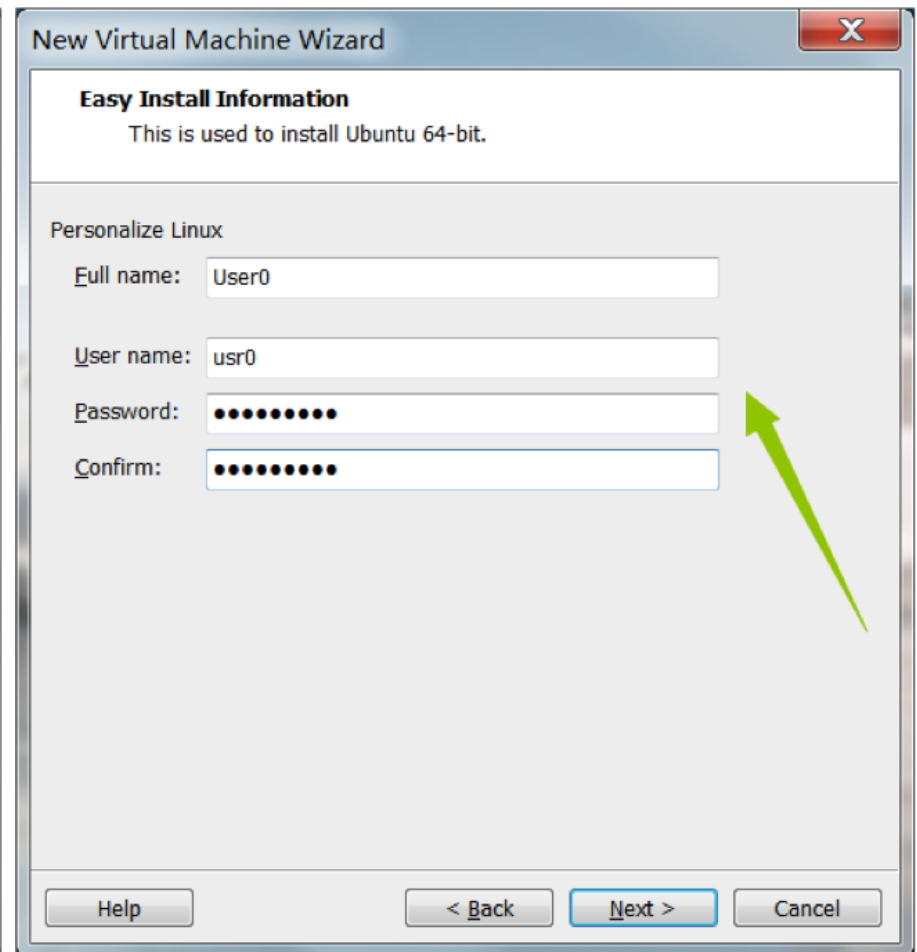
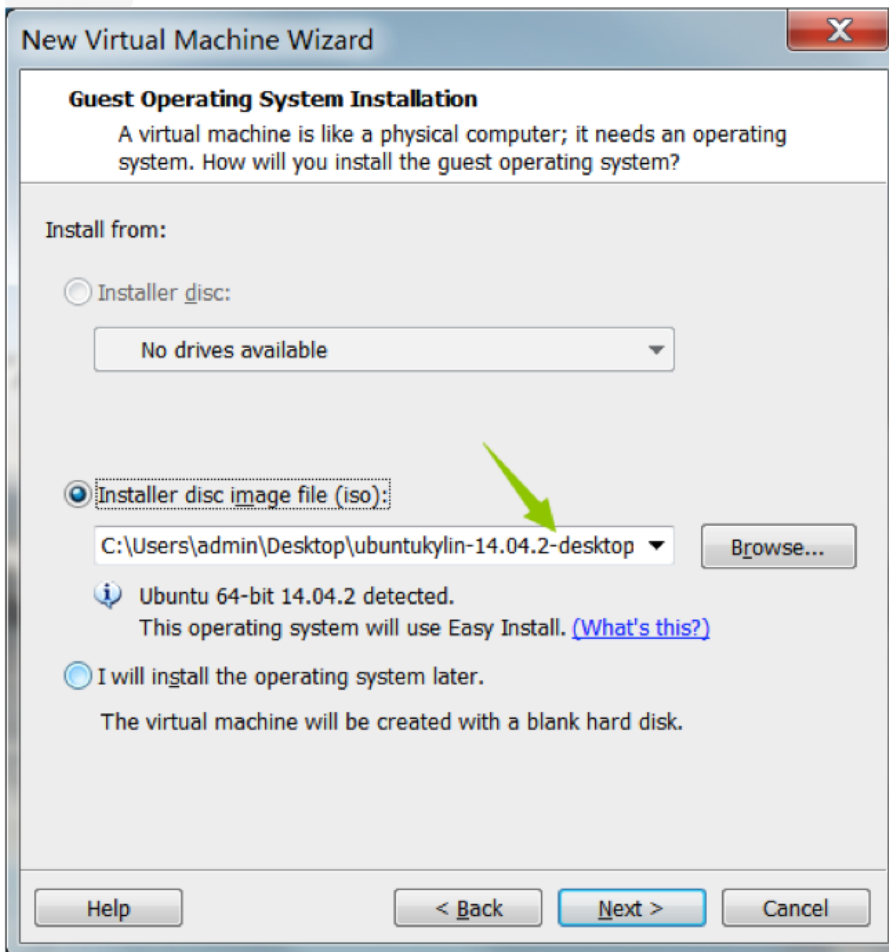


Create a Virtual Machine



Create a Virtual Machine

In the computers in our computer room, our .iso-file lies on path E:/ of the system.



Create a Virtual Machine

New Virtual Machine Wizard

Name the Virtual Machine
What name would you like to use for this virtual machine?

Virtual machine name:
Ubuntu 64-bit

Location:
C:\Users\admin\Documents\Virtual Machines\Ubuntu 64-bit Browse...

The default location can be changed at Edit > Preferences.

< Back Next > Cancel

New Virtual Machine Wizard

Processor Configuration
Specify the number of processors for this virtual machine.

Processors

Number of processors: 1

Number of cores per processor: 2

Total processor cores: 2

Help < Back Next > Cancel

Create a Virtual Machine

New Virtual Machine Wizard

Memory for the Virtual Machine
How much memory would you like to use for this virtual machine?

Specify the amount of memory allocated to this virtual machine. The memory size must be a multiple of 4 MB.

64 GB
32 GB
16 GB
8 GB
4 GB
2 GB
1 GB
512 MB
256 MB
128 MB
64 MB
32 MB
16 MB
8 MB
4 MB

Memory for this virtual machine: 4096 MB

Maximum recommended memory: 13644 MB

Recommended memory: 1024 MB

Guest OS recommended minimum: 512 MB

Help < Back Next > Cancel

New Virtual Machine Wizard

Network Type
What type of network do you want to add?

Network connection

☐ Use bridged networking
Give the guest operating system direct access to an external Ethernet network. The guest must have its own IP address on the external network.

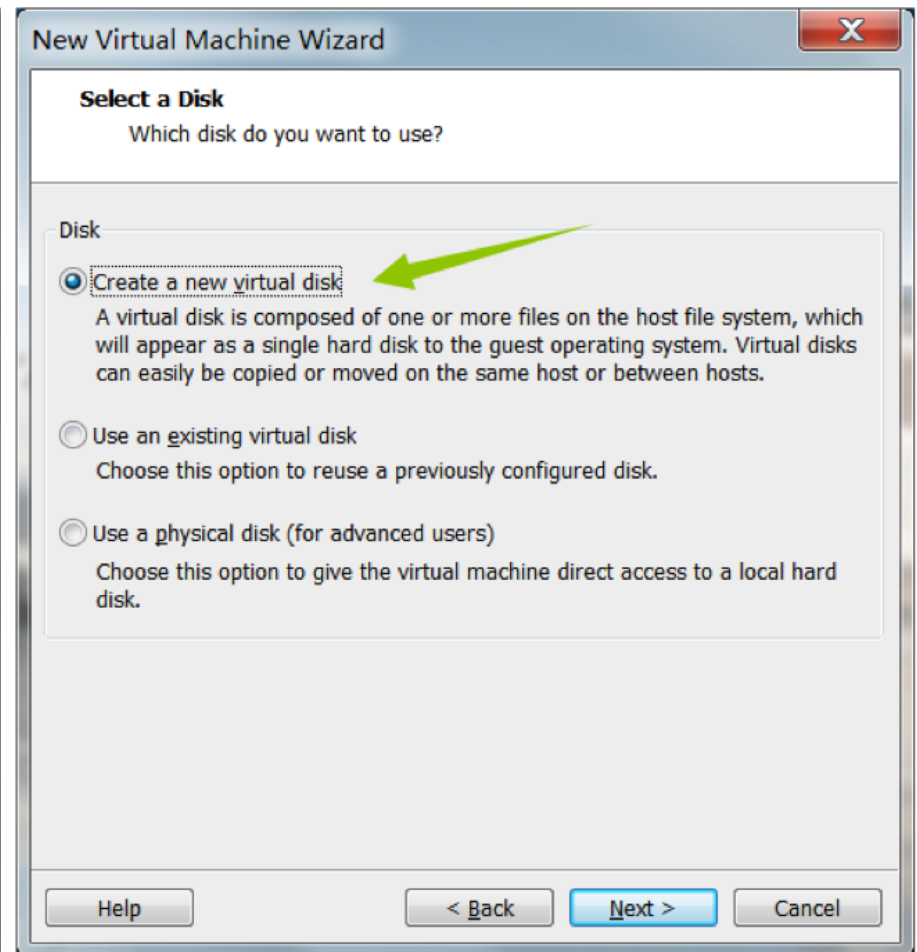
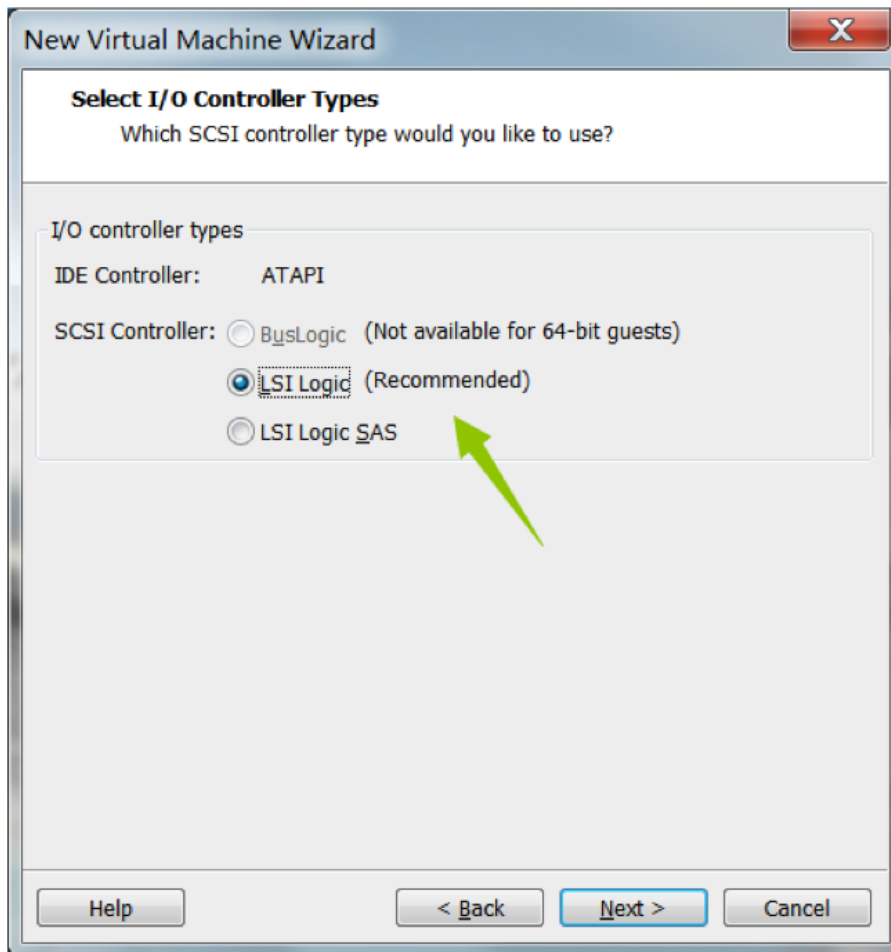
☒ Use network address translation (NAT)
Give the guest operating system access to the host computer's dial-up or external Ethernet network connection using the host's IP address.

☐ Use host-only networking
Connect the guest operating system to a private virtual network on the host computer.

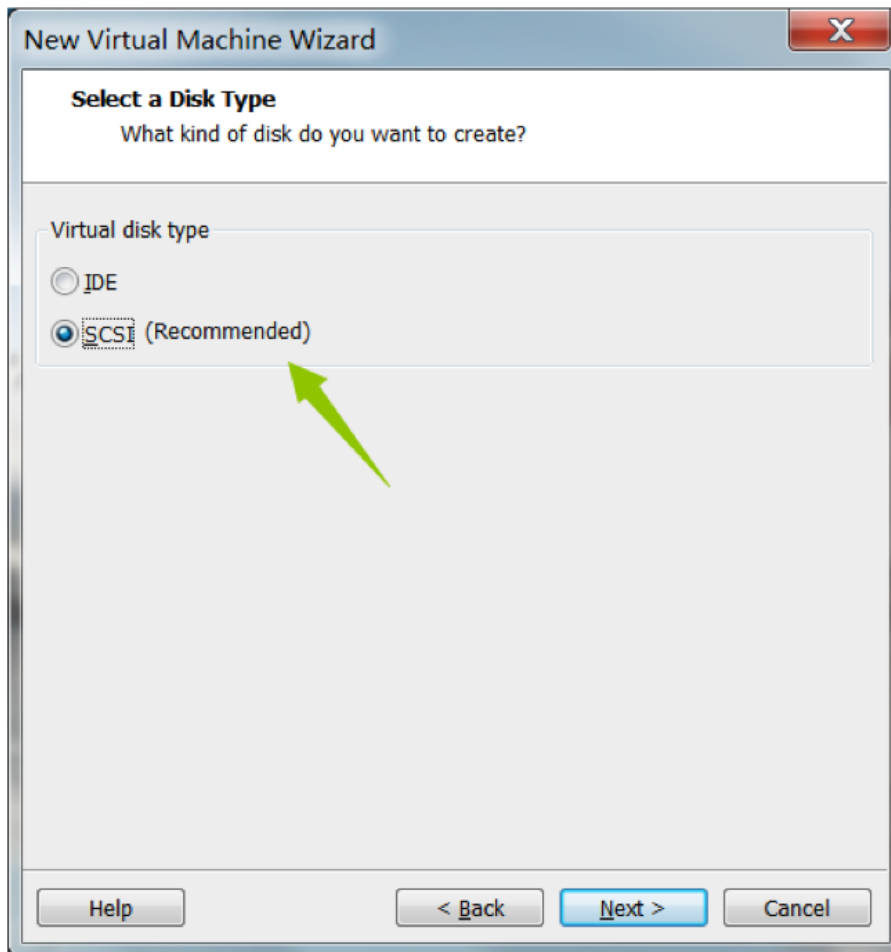
☐ Do not use a network connection

Help < Back Next > Cancel

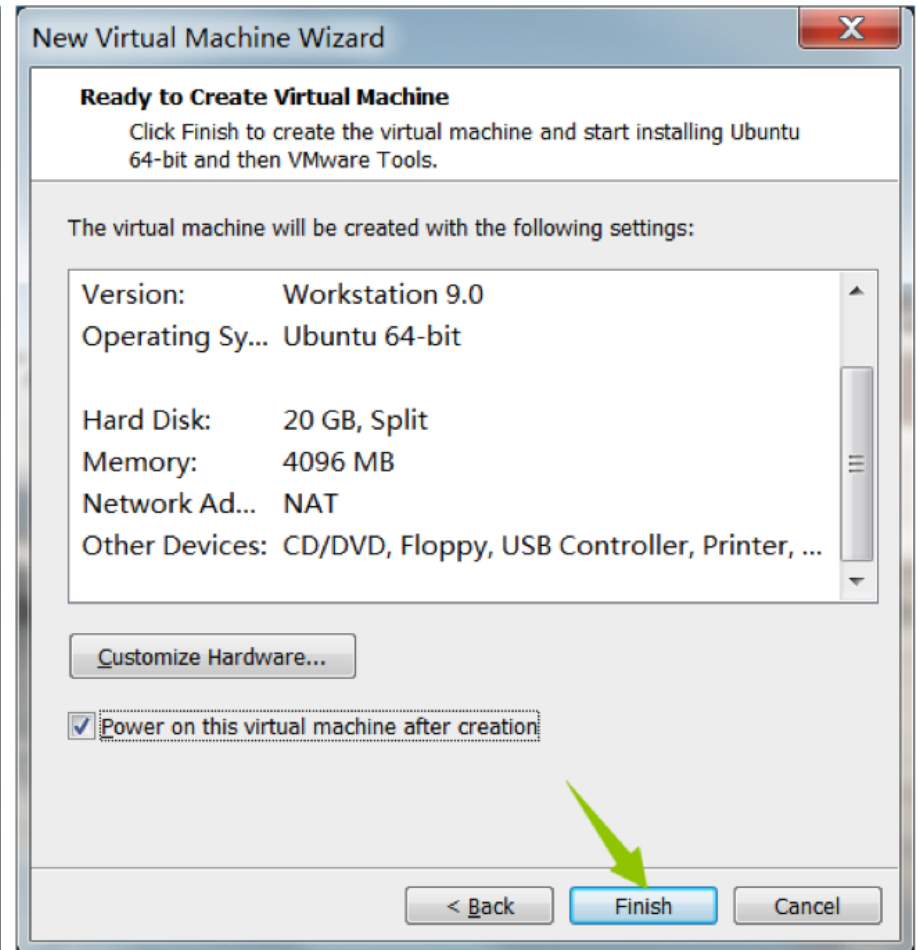
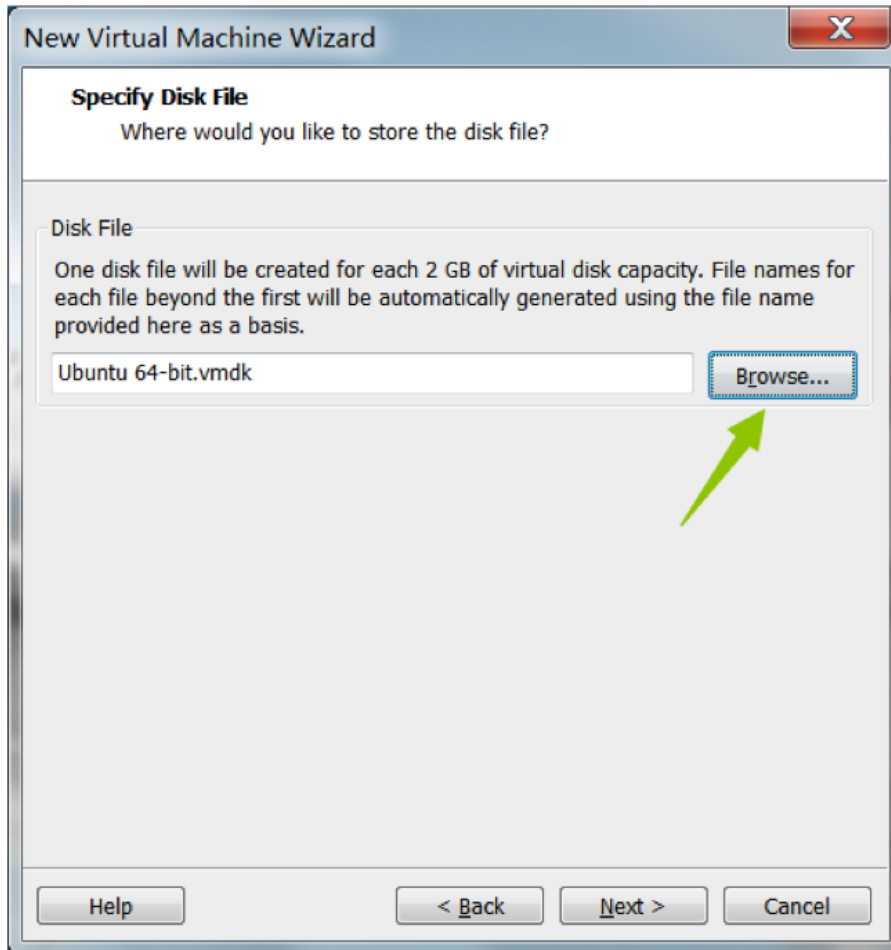
Create a Virtual Machine



Create a Virtual Machine



Create a Virtual Machine



Create a Virtual Machine (Mac)

Mac Virtual Machine -- Parallels desktop

```
Ubuntu14.iso-> magnet:?  
xt=urn:btih:5EE7E1DC3E01F362B0E53BFEE9E4D6DCDEDAD61B
```

```
Parallels desktop-> http://xclient.info/s/parallels-  
desktop.html?t=2c5f238779ee02ff6e1b5cda873deeacaeabc304
```

Create a Virtual Machine (Mac)



Create a Virtual Machine (Mac)



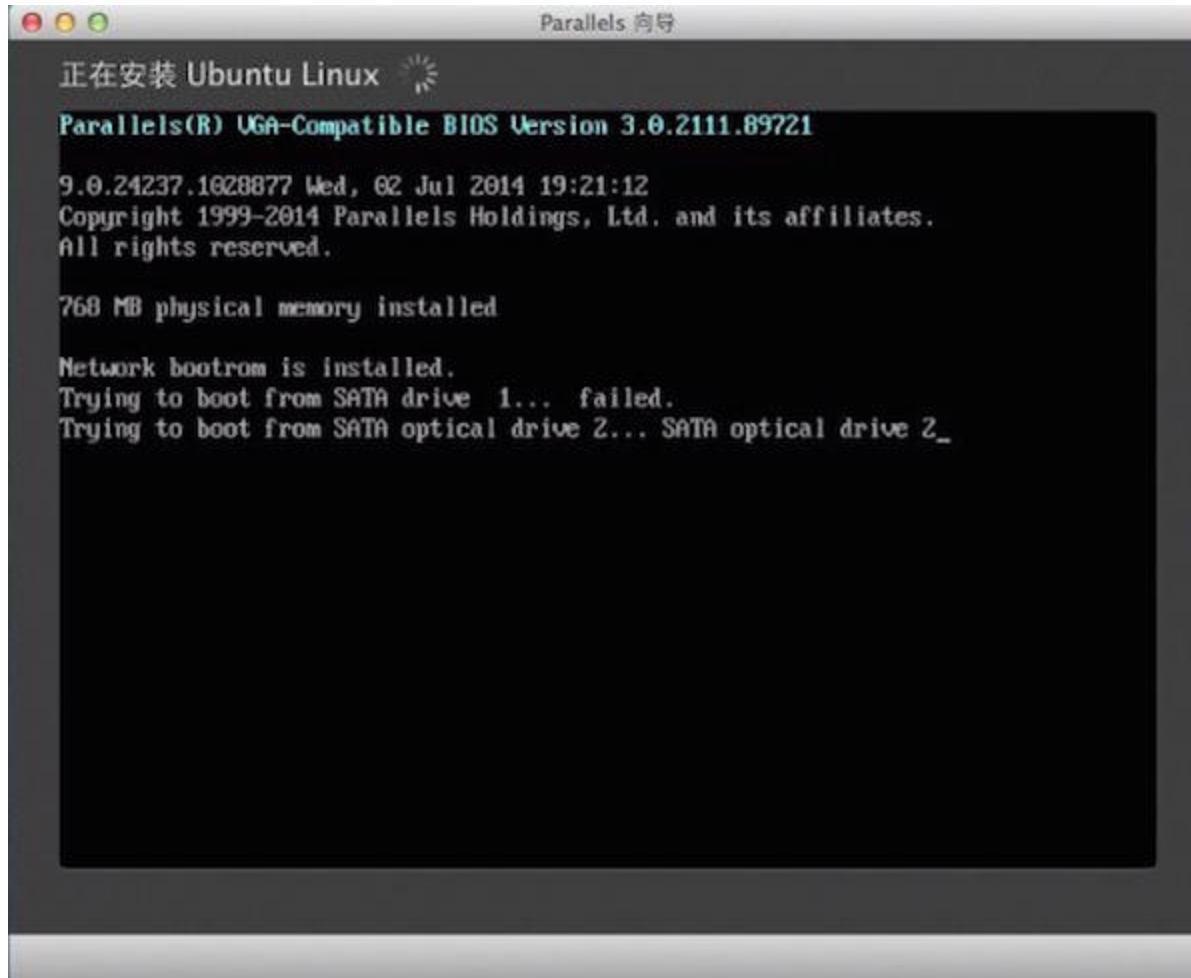
Create a Virtual Machine (Mac)



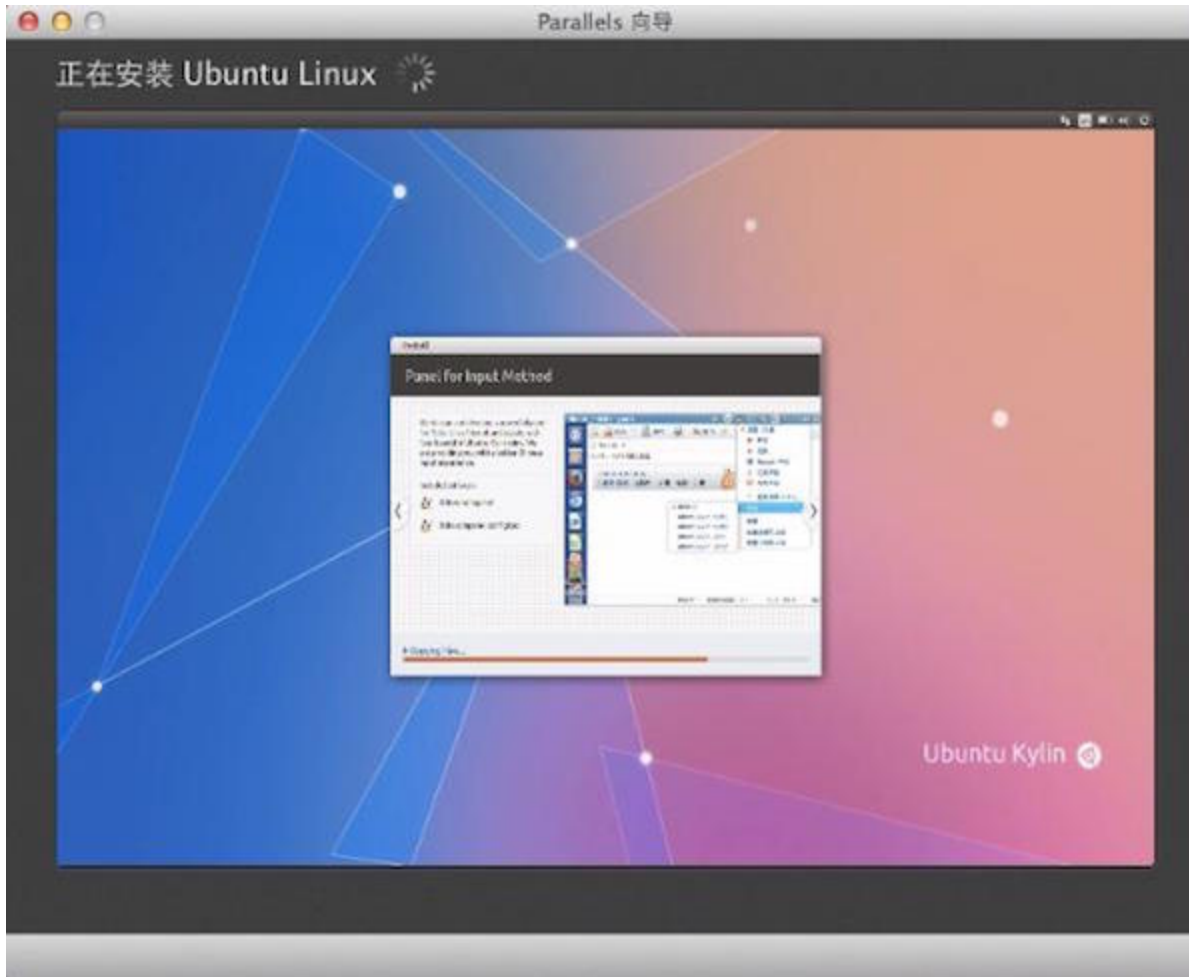
Create a Virtual Machine (Mac)



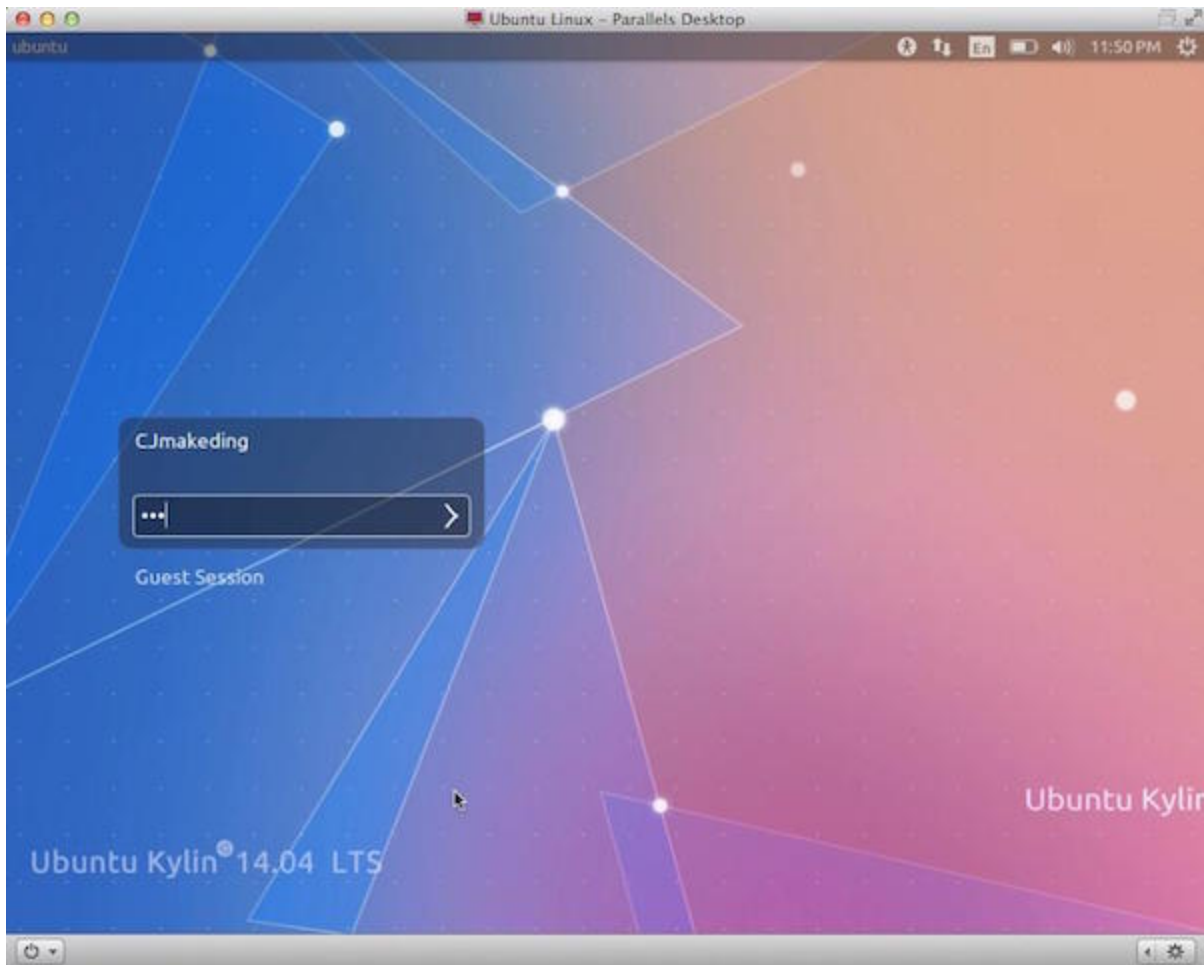
Create a Virtual Machine (Mac)



Create a Virtual Machine (Mac)



Create a Virtual Machine (Mac)



PART I

- Brief Introduction
- Basic Conceptions & Environment
- Install & Configure a Virtual Machine
- Basic Commands

Basic Commands

command [-options] [arguments]

- cd pwd ls
- su chmod cat
- touch rename mv cp
- mkdir rmdir rm
- find grep
- > >> | xargs
- awk
- man help --help

cd (change directory)

```
cd  
cd ~  
cd -  
cd ..
```

pwd (print working directory)

```
pwd
```

ls (list segment)

- l** long - Displaying long format
- a** all - Lists all files in the given directory
- R** recursive - Recursively lists subdirectories.
- d** directory - Shows information about a directory

```
ls
ls -l
ls -a
ls -R
ls -d
ls -la
ls -ld
...
```


su (switch user)

```
su oslab
```

chmod (change mode)

```
chmod 660 class1.txt  
chmod u-r class1.txt
```

cat (concatenate)

```
cat class1.txt  
cat oslab0.txt
```

touch

```
touch oslab.txt
```

rename

```
rename 's/oslab/oslab0/' *.*
```

mv (move)

```
mv oslab00.txt oslab02.txt  
mv oslab01.txt oslab02.txt /home/parallels
```

cp (copy)

```
cp oslab03.txt /home/parallels
```

mkdir (make directory)

```
mkdir Lesson1/rename
```

rmdir (remove empty directory)

```
rmdir empty
```

rm (remove)

- r** recursive
- i** interactive
- f** force

```
rm -rf Lesson1/*  
rm -i oslab0.txt
```

find

```
find ~ -name "*.txt"
```

grep

globally search a regular expression and print

```
grep match_pattern file_name  
grep oslab oslab04.txt  
grep -i oslab oslab04.txt
```

> & >> (redirection)

```
cat oslab05.txt oslab06.txt > oslab07.txt  
cat oslab05.txt oslab06.txt >> oslab07.txt
```

| (pipeline)

```
command1 | command2  
cat oslab08.txt | grep linux
```

xargs

```
cat oslab08.txt | ls -l  
cat oslab08.txt | xargs ls -l
```

awk (Aho, Weinberg & Kernighan)

AWK is a programming language designed for text processing and typically used as a data extraction and reporting tool.

pattern { action }

BEGIN、 regular expression、 END

{ function calls, variable assignments, calculations }

```
awk 'BEGIN { print "Hello, world!" }'
```

man (manual)

```
man ls
```

help

```
help cd
```

--help

```
ls --help
```

Wikipedia

<https://en.wikipedia.org/wiki/AWK>